

YAMAWA



P2 HSS-E
YAMAWA
JAPAN

YAMAWA
JAPAN

Made in Japan

PAFTALAR



0941 / HSS PAFTA (DIN223B)

0941	M 3
0941	M 4
0941	M 5
0941	M 6
0941	M 8
0941	M10
0941	M12
0941	M14
0941	M16
0941	M18
0941	M20
0941	M22
0941	M24
0941	M27
0941	M30
0941	M33
0941	M36



0943 / HSS İNCE DİŞ PAFTA (DIN223B)

0943	M 6 x 0,5
0943	M 6 x 0,75
0943	M 7 x 0,75
0943	M 8 x 0,5
0943	M 8 x 0,75
0943	M 8 x 1,0
0943	M 9 x 0,75
0943	M 9 x 1,0
0943	M10 x 1,0
0943	M10 x 1,25
0943	M12 x 1,0
0943	M12 x 1,25
0943	M12 x 1,5
0943	M14 x 1,0
0943	M14 x 1,25
0943	M14 x 1,5
0943	M16 x 1,0
0943	M16 x 1,5
0943	M18 x 1,0
0943	M18 x 1,5
0943	M18 x 2,0
0943	M20 x 1,0
0943	M20 x 1,5



CS-QM 60° ÇOK AĞIZLI HAVŞA FREZE

CS-QM-6	MM. 6 x 60°
CS-QM-8	MM. 8 x 60°
CS-QM-10	MM. 10 x 60°
CS-QM-12	MM. 12 x 60°
CS-QM-16	MM. 16 x 60°
CS-QM-20	MM. 20 x 60°
CS-QM-25	MM. 25 x 60°
CS-QM-30	MM. 30 x 60°
CS-QM-35	MM. 35 x 60°
CS-QM-40	MM. 40 x 60°



CS-QM 90° ÇOK AĞIZLI HAVŞA FREZE

CS-QM-6	MM. 6 x 90°
CS-QM-8	MM. 8 x 90°
CS-QM-10	MM. 10 x 90°
CS-QM-12	MM. 12 x 90°
CS-QM-16	MM. 16 x 90°
CS-QM-20	MM. 20 x 90°
CS-QM-25	MM. 25 x 90°
CS-QM-30	MM. 30 x 90°
CS-QM-35	MM. 35 x 90°
CS-QM-40	MM. 40 x 90°



0021 / HSS PUNTA MATKABI (DIN333)

Uç Çapı x Gövde Çapı x Boy (mm)

0021-0,5	0,5 x 3,15 x 25
0021-0,8	0,8 x 3,15 x 25
0021-1,0	1,0 x 3,15 x 31,5
0021-1,25	1,25 x 3,15 x 31,5
0021-1,60	1,6 x 4,0 x 35,5
0021-2,0	2,0 x 5,0 x 40
0021-2,5	2,5 x 6,3 x 45
0021-3,15	3,15 x 8,0 x 50
0021-4,0	4,0 x 10 x 56
0021-5,0	5,0 x 12,5 x 63
0021-6,3	6,3 x 16 x 71
0021-8,0	8,0 x 20 x 80
0021-10,0	10,0 x 25 x 100



2620 / 45 HRC DÜZ MAKİNA KILAVUZU (DIN371)

2620	M 3
2620	M 4
2620	M 5
2620	M 6
2620	M 8
2620	M10



2720 / 45 HRC DÜZ MAKİNA KILAVUZU (DIN376)

2720	M12
2720	M14
2720	M16
2720	M18
2720	M20
2720	M22
2720	M24



CD-SL HSS UZUN PUNTA MATKABI

Uç Çapı x Gövde Çapı x Boy (mm)

CD-SL-1,0	1,0 x 4,0 x 100
CD-SL-1,5	1,5 x 5,0 x 100
CD-SL-2,0	2,0 x 6,0 x 100
CD-SL-2,5	2,5 x 8,0 x 100
CD-SL-3,0	3,0 x 8,0 x 100
CD-SL-4,0	4,0 x 10,0 x 100
CD-SL-5,0	5,0 x 12 x 100



NCSD90- HSS/Co8% MERKEZLEME MATKABI 90°

NCSD90-3	3x46x12
NCSD90-4	4x55x15
NCSD90-5	5x62x18
NCSD90-6	6x66x20
NCSD90-8	8x79x26
NCSD90-10	10x89x30
NCSD90-12	12x102x36
NCSD90-16	16x115x41
NCSD90-20	20x131x46
NCSD90-25	25x151x52



9353 / TİN KAPLI SU KANALLI OVALAMA KILAVUZU (DIN376)

9353TI	M 2
9353TI	M 2,5
9353TI	M 3
9353TI	M 3,5
9353TI	M 4
9353TI	M 5
9353TI	M 6
9353TI	M 8
9353TI	M10
9353TI	M12
9353TI	M14
9353TI	M16


**UH-CT 50-60 HRC TIALN
SERT METAL MAKINA KILAVUZU**

UH-CT	M 2
UH-CT	M 2.5
UH-CT	M 2.6
UH-CT	M 3
UH-CT	M 4
UH-CT	M 5
UH-CT	M 6
UH-CT	M 8
UH-CT	M10
UH-CT	M10 x 1.25
UH-CT	M12
UH-CT	M12 x 1.25
UH-CT	M12 x 1.5
UH-CT	M14
UH-CT	M14 x 1.5
UH-CT	M16
UH-CT	M16 x 1.5
UH-CT	M18
UH-CT	M18 x 1.5
UH-CT	M20
UH-CT	M20 x 1.5


9726 NI (DIN 376) DÖKÜM MAKINA KILAVUZU

9726NI	M 5
9726NI	M 6
9726NI	M 8
9726NI	M10
9726NI	M12
9726NI	M14
9726NI	M16
9726NI	M18
9726NI	M20
9726NI	M22
9726NI	M24


**9626 TC-OH (DIN 371) SU YOLLU
DÖKÜM MAKINA KILAVUZU**

9626TCOH	M 6
9626TCOH	M 8
9626TCOH	M10


**3626 / 3726 BR (DIN 371 / 376) SERT METAL
MAKINA KILAVUZU**

3626	M 3
3626	M 4
3626	M 5
3626	M 6
3626	M 8
3626	M10
3726	M12
3726	M14
3726	M16
3726	M18
3726	M20


**9726 TC-OH (DIN 376) SU YOLLU
DÖKÜM MAKINA KILAVUZU**

9726TCOH	M12
9726TCOH	M14
9726TCOH	M16
9726TCOH	M18
9726TCOH	M20


**9626 NI DÖKÜM MAKINA KILAVUZLAR
(DIN371)**

9626NI	M 3
9626NI	M 4
9626NI	M 5
9626NI	M 6
9626NI	M 8
9626NI	M10


9630 / BR E. BİLEME DIN 371 MAKİNA KILAVUZU

9630	M 1.6
9630	M 1.7
9630	M 1.8
9630	M 2
9630	M 2.2
9630	M 2.3
9630	M 2.5
9630	M 2.6
9630	M 3
9630	M 3.5
9630	M 4
9630	M 5
9630	M 6
9630	M 7
9630	M 8
9630	M10


9640 / BR 40° HELİS DIN 371 MAKİNA KILAVUZU

9640	M 2
9640	M 2.2
9640	M 2.3
9640	M 2.5
9640	M 2.6
9640	M 3
9640	M 3.5
9640	M 4
9640	M 5
9640	M 6
9640	M 7
9640	M 8
9640	M10


9730 / BR E. BİLEME DIN 376 MAKİNA KILAVUZU

9730	M 3
9730	M 4
9730	M 5
9730	M 6
9730	M 8
9730	M10
9730	M12
9730	M14
9730	M16
9730	M18
9730	M20
9730	M22
9730	M24
9730	M27
9730	M30
9730	M33
9730	M36


9740 / BR 40° HELİS DIN 376 MAKİNA KILAVUZU

9740	M 3
9740	M 4
9740	M 5
9740	M 6
9740	M 8
9740	M10
9740	M12
9740	M14
9740	M16
9740	M18
9740	M20
9740	M22
9740	M24
9740	M27
9740	M30
9740	M33
9740	M36
9740	M39
9740	M42
9740	M45
9740	M48


**9634 BR ALÜMİNYUM MAKİNA KILAVUZU
(DIN371)**

9634	M 2
9634	M 2.5
9634	M 3
9634	M 4
9634	M 5
9634	M 6
9634	M 8
9634	M10


**9734 BR ALÜMİNYUM MAKİNA KILAVUZU
(DIN376)**

9734	M 6
9734	M 8
9734	M10
9734	M12
9734	M14
9734	M16
9734	M18
9734	M20


**9830/BR E.BİLEME İNCE DİŞ MAKİNA KILAVUZU
(DIN374)**

9830	M 3 x 0,35
9830	M 4 x 0,35
9830	M 4 x 0,5
9830	M 5 x 0,5
9830	M 6 x 0,5
9830	M 6 x 0,75
9830	M 8 x 0,5
9830	M 8 x 0,75
9830	M 8 x 1,0
9830	M10 x 0,75
9830	M10 x 1,0
9830	M10 x 1,25
9830	M12 x 1,0
9830	M12 x 1,25
9830	M12 x 1,5
9830	M14 x 1,0
9830	M14 x 1,25
9830	M14 x 1,5
9830	M16 x 1,0
9830	M16 x 1,5
9830	M18 x 1,0
9830	M18 x 1,5
9830	M18 x 2,0
9830	M20 x 1,0
9830	M20 x 1,5
9830	M20 x 2,0
9830	M22 x 1,0
9830	M22 x 1,5
9830	M22 x 2,0
9830	M24 x 1,0
9830	M24 x 1,5
9830	M24 x 2,0
9830	M25 x 1,5
9830	M26 x 1,5
9830	M27 x 1,0
9830	M27 x 1,5
9830	M27 x 2,0
9830	M28 x 1,0
9830	M28 x 1,5
9830	M28 x 2,0
9830	M30 x 1,0
9830	M30 x 1,5
9830	M30 x 2,0

**9841/BR HELİS İNCE DİŞ MAKİNA KILAVUZU
(DIN374)**

9841	M 8 x 0,75
9841	M 8 x 1,0
9841	M10 x 1,0
9841	M10 x 1,25
9841	M12 x 1,0
9841	M12 x 1,25
9841	M12 x 1,5
9841	M14 x 1,0
9841	M14 x 1,5
9841	M16 x 1,0
9841	M16 x 1,5

**6211 İNCE DİŞ TAKIM KILAVUZLAR (2' li)
(DIN2181)**

6211	M3 x 0,35
6211	M3,5 x 0,35
6211	M4 x 0,35
6211	M4 x 0,5
6211	M5 x 0,5
6211	M6 x 0,5
6211	M6 x 0,75
6211	M7 x 0,5
6211	M7 x 0,75
6211	M8 x 0,5
6211	M8 x 0,75
6211	M8 x 1,0
6211	M9 x 0,75
6211	M9 x 1,0
6211	M10 x 0,5
6211	M10 x 0,75
6211	M10 x 1,0
6211	M10 x 1,25
6211	M12 x 0,75
6211	M12 x 1,0
6211	M12 x 1,25
6211	M12 x 1,5
6211	M14 x 1,0
6211	M14 x 1,25
6211	M14 x 1,5
6211	M15 x 1,0
6211	M15 x 1,5
6211	M16 x 1,0
6211	M16 x 1,25
6211	M16 x 1,5
6211	M18 x 1,0
6211	M18 x 1,5
6211	M18 x 2,0
6211	M20 x 1,0
6211	M20 x 1,5
6211	M20 x 2,0
6211	M22 x 1,0
6211	M22 x 1,5
6211	M22 x 2,0
6211	M24 x 1,0
6211	M24 x 1,5
6211	M24 x 2,0
6211	M25 x 1,0
6211	M25 x 1,5
6211	M25 x 2,0


**9635 OX EĞİK BİLEME İNOX MAKİNA KILAVUZU
(DIN371)**

9635OX	M 2
9635OX	M 2,5
9635OX	M 3
9635OX	M 4
9635OX	M 5
9635OX	M 6
9635OX	M 8
9635OX	M10



**9735 OX EĞİK BİLEME İNOX MAKİNA KILAVUZU
(DIN376)**

97350X	M 8
97350X	M10
97350X	M12
97350X	M14
97350X	M16
97350X	M18
97350X	M20
97350X	M22
97350X	M24
97350X	M27
97350X	M30



9645 OX DIN 371 İNOX HELİS MAKİNA KILAVUZU

96450X	M 2
96450X	M 2,5
96450X	M 3
96450X	M 4
96450X	M 5
96450X	M 6
96450X	M 8
96450X	M10



9745 OX DIN 376 İNOX HELİS MAKİNA KILAVUZU

97450X	M 8
97450X	M10
97450X	M12
97450X	M14
97450X	M16
97450X	M18
97450X	M20
97450X	M22
97450X	M24
97450X	M27
97450X	M30



**6110 HSS TAKIM KILAVUZU (3' lü)
(DIN352)**

6110	M 1
6110	M 1,1
6110	M 1,2
6110	M 1,4
6110	M 1,6
6110	M 1,7
6110	M 1,8
6110	M 2
6110	M 2,2
6110	M 2,3
6110	M 2,5
6110	M 2,6
6110	M 3
6110	M 3,5
6110	M 4
6110	M 4,5
6110	M 5
6110	M 6
6110	M 7
6110	M 8
6110	M 9
6110	M10
6110	M11
6110	M12
6110	M14
6110	M16
6110	M18
6110	M20
6110	M22
6110	M24
6110	M27
6110	M30

OSAWA JAPON FREZELER



WS4 HSS C08 PARMAK FREZE (DIN844)

Kod	Çap	Sap Çapı	Tam Boy	Kesme Boyu	Ağız Sayısı
WS4	2	6	51	7	4
WS4	3	6	52	8	4
WS4	4	6	55	11	4
WS4	5	6	57	13	4
WS4	6	6	57	13	4
WS4	7	10	66	16	4
WS4	8	10	69	19	4
WS4	9	10	69	19	4
WS4	10	10	72	22	4
WS4	11	12	79	22	4
WS4	12	12	83	26	4
WS4	13	12	83	26	4
WS4	14	12	83	26	4
WS4	15	12	83	26	4
WS4	16	16	92	32	4
WS4	17	16	92	32	4
WS4	18	16	92	32	4
WS4	19	16	92	32	4
WS4	20	20	104	38	4



WSFR HSS C08 KABA TALAŞ PARMAK FREZE (DIN844)

Kod	Çap	Sap Çapı	Tam Boy	Kesme Boyu	Ağız Sayısı
WSFR	6	6	57	13	4
WSFR	8	10	69	19	4
WSFR	9	10	69	19	4
WSFR	10	10	72	22	4
WSFR	11	12	79	22	4
WSFR	12	12	83	26	4
WSFR	13	12	83	26	4
WSFR	14	12	83	26	4
WSFR	15	12	83	26	4
WSFR	16	16	92	32	4
WSFR	18	16	92	32	4
WSFR	20	20	104	38	4
WSFR	22	20	104	38	4



WL4 HSS C08 UZUN PARMAK FREZE (DIN844)

Kod	Çap	Sap Çapı	Tam Boy	Kesme Boyu	Ağız Sayısı
WL4	3	6	56	12	4
WL4	4	6	63	19	4
WL4	5	6	68	24	4
WL4	6	6	68	24	4
WL4	7	10	80	30	4
WL4	8	10	88	38	4
WL4	9	10	88	38	4
WL4	10	10	95	45	4
WL4	11	12	102	45	4
WL4	12	12	110	53	4
WL4	13	12	110	53	4
WL4	14	12	110	53	4
WL4	15	12	110	53	4
WL4	16	16	123	63	4
WL4	17	16	123	63	4
WL4	18	16	123	63	4
WL4	20	20	141	75	4



WWK ÇAPRAZ T. FREZE (DIN850)

WWK	10,5 x 2,5 mm
WWK	13,5 x 3 mm
WWK	16,5 x 5 mm
WWK	19,5 x 3 mm
WWK	19,5 x 4 mm
WWK	19,5 x 5 mm
WWK	19,5 x 6 mm
WWK	22,5 x 4 mm
WWK	22,5 x 5 mm
WWK	22,5 x 6 mm
WWK	22,5 x 8 mm
WWK	25,5 x 5 mm
WWK	25,5 x 6 mm
WWK	25,5 x 7 mm
WWK	25,5 x 8 mm
WWK	28,5 x 5 mm
WWK	28,5 x 6 mm
WWK	28,5 x 7 mm
WWK	28,5 x 8 mm
WWK	32,5 x 5 mm
WWK	32,5 x 6 mm
WWK	32,5 x 7 mm
WWK	32,5 x 8 mm
WWK	32,5 x 10 mm

OSAWA JAPON FREZELER



**MEXCLSB2 (65-70HRC) SERT METAL KÜRE PARMAK FREZE
(2 AĞIZLI)**

Kod	Çap	Sap Çapı	Tam Boy	Kesme Boyu	Ağız Sayısı
MEXCLSB2	1	4	50	2.5	2
MEXCLSB2	1	6	50	2.5	2
MEXCLSB2	1,5	4	50	4	2
MEXCLSB2	1,5	6	50	4	2
MEXCLSB2	2	6	50	5	2
MEXCLSB2	2,5	6	60	6	2
MEXCLSB2	3	6	60	8	2
MEXCLSB2	3,5	6	70	8	2
MEXCLSB2	4	6	70	8	2
MEXCLSB2	5	6	80	10	2
MEXCLSB2	6	6	90	12	2
MEXCLSB2	7	8	90	14	2
MEXCLSB2	8	8	100	14	2
MEXCLSB2	9	10	100	18	2
MEXCLSB2	10	10	100	18	2
MEXCLSB2	12	12	110	22	2
MEXCLSB2	14	14	110	26	2
MEXCLSB2	16	16	140	30	2
MEXCLSB2	18	18	140	34	2
MEXCLSB2	20	20	160	38	2
MEXCLSB2	25	25	180	50	2



MEXCS4 (65-70HRC) SERT METAL PARMAK FREZE

Kod	Çap	Sap Çapı	Tam Boy	Kesme Boyu	Ağız Sayısı
MEXCS4	2	4	40	6	4
MEXCS4	2	6	40	6	4
MEXCS4	2,5	4	40	8	4
MEXCS4	2,5	6	40	8	4
MEXCS4	3	6	45	8	4
MEXCS4	3,5	6	45	10	4
MEXCS4	4	6	45	11	4
MEXCS4	4,5	6	45	11	4
MEXCS4	5	6	50	13	4
MEXCS4	5,5	6	50	13	4
MEXCS4	6	6	50	13	4
MEXCS4	6,5	8	60	16	4
MEXCS4	7	8	60	16	4
MEXCS4	7,5	8	60	16	4
MEXCS4	8	8	60	19	4
MEXCS4	8,5	10	70	19	4
MEXCS4	9	10	70	19	4
MEXCS4	9,5	10	70	19	4
MEXCS4	10	10	70	22	4
MEXCS4	10,5	12	75	22	4
MEXCS4	11	12	75	22	4
MEXCS4	11,5	12	75	26	4
MEXCS4	12	12	75	26	4
MEXCS4	13	12	85	26	4
MEXCS4	14	14	85	26	4
MEXCS4	15	16	90	26	4
MEXCS4	16	16	100	32	4
MEXCS4	17	16	100	32	4
MEXCS4	18	18	100	32	4
MEXCS4	19	20	100	32	4
MEXCS4	20	20	105	38	4
MEXCS4	22	20	105	38	4
MEXCS4	24	25	120	45	4
MEXCS4	25	25	120	45	4



MEXCSHM (65-70HRC) ÇOK AĞIZLI SERT METAL PARMAK FREZE

Kod	Çap	Sap Çapı	Tam Boy	Kesme Boyu	Ağız Sayısı
MEXCSHM	6	6	57	13	6
MEXCSHM	7	8	63	16	6
MEXCSHM	8	8	63	19	6
MEXCSHM	9	10	72	19	6
MEXCSHM	10	10	72	22	6
MEXCSHM	12	12	83	26	6
MEXCSHM	14	14	83	26	6
MEXCSHM	16	16	92	32	6
MEXCSHM	18	18	92	32	6
MEXCSHM	20	20	104	38	6
MEXCSHM	25	25	104	44	6

OSAWA JAPON FREZELER



MEXCL4 (65-70HRC) SERT METAL UZUN PARMAK FREZE

Kod	Çap	Sap Çapı	Tam Boy	Kesme Boyu	Ağız Sayısı
MEXCL4	2	4	40	8	4
MEXCL4	3	6	50	12	4
MEXCL4	4	6	50	15	4
MEXCL4	5	6	60	20	4
MEXCL4	6	6	60	20	4
MEXCL4	8	8	70	25	4
MEXCL4	10	10	90	30	4
MEXCL4	12	12	90	30	4
MEXCL4	14	14	110	40	4
MEXCL4	16	16	110	50	4
MEXCL4	18	18	110	50	4
MEXCL4	20	20	110	55	4
MEXCL4	25	25	140	75	4



MEXCLSB4 (65-70HRC) SERT METAL KÜRE PARMAK FREZE (4 AĞIZLI)

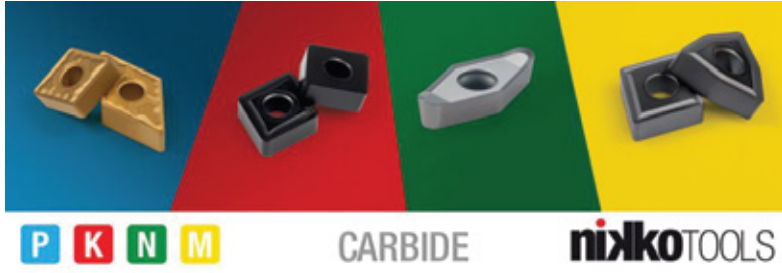
Kod	Çap	Sap Çapı	Tam Boy	Kesme Boyu	Ağız Sayısı
MEXCLSB4	1	4	50	2,5	2
MEXCLSB4	1	6	50	2,5	2
MEXCLSB4	1,5	4	50	4	2
MEXCLSB4	1,5	6	50	4	2
MEXCLSB4	2	6	50	5	2
MEXCLSB4	3	6	60	8	2
MEXCLSB4	4	6	70	8	2
MEXCLSB4	5	6	80	10	2
MEXCLSB4	6	6	90	12	2
MEXCLSB4	7	8	90	14	2
MEXCLSB4	8	8	100	14	2
MEXCLSB4	9	10	100	18	2
MEXCLSB4	10	10	100	18	2
MEXCLSB4	12	12	110	22	2
MEXCLSB4	14	14	110	26	2
MEXCLSB4	16	16	140	30	2
MEXCLSB4	18	18	140	34	2
MEXCLSB4	20	20	160	38	2
MEXCLSB4	25	25	180	50	2



MEXCLHM (65-70HRC) ÇOK AĞIZLI SERT METAL UZUN PARMAK FREZE

Kod	Çap	Sap Çapı	Tam Boy	Kesme Boyu	Ağız Sayısı
MEXCLHM	6	6	70	26	6
MEXCLHM	8	8	90	36	6
MEXCLHM	10	10	100	46	6
MEXCLHM	12	12	110	56	6
MEXCLHM	16	16	130	66	6
MEXCLHM	20	20	140	76	6
MEXCLHM	25	25	180	92	6

NIKKO Takma Uçları



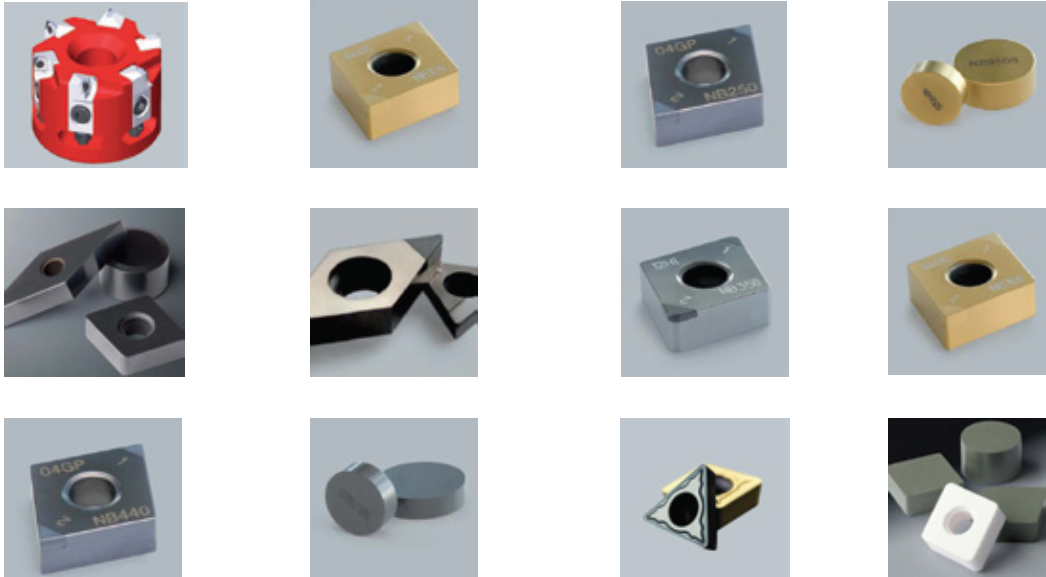
NIKKO : Kesici takım konusunda geniş ürün yelpazesine sahip NIKKO Ürünleri mekanik sanayinin çok farklı gereksinimlerine cevap verecek niteliktedirler.

*NIKKO PCD ve PCBN takma uçlar PCD ve PCBN kaynak uçlu standart ve özel takımlar.

*NIKKO TUTUCULAR : Torna Katerleri, freze kafaları, U drill.

*NIKKO CARBİDE : Takma uçlu sert metal uçlar.

*NIKKO CERAMİK : Döküm ve sertleştirilmiş malzemeler için seramik takma uçlar.



Bu ürün grubunun kataloğunu isteyiniz.